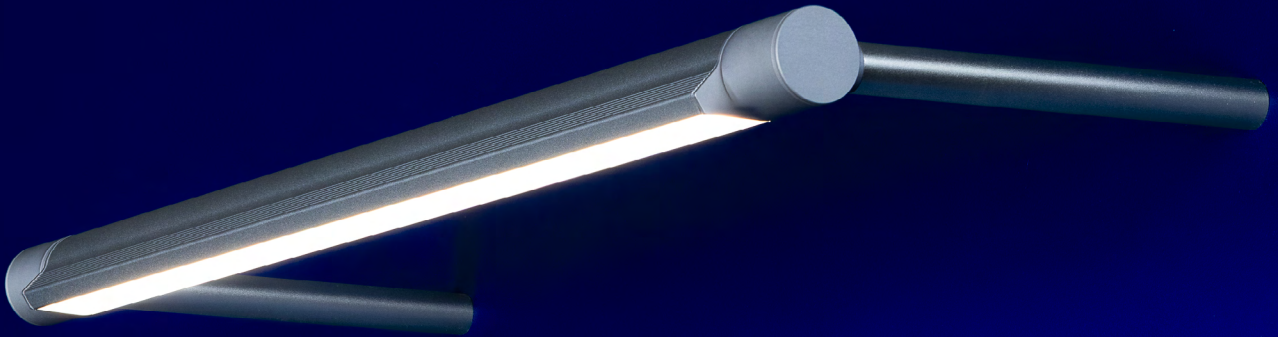


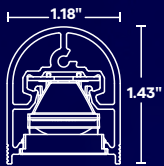
AERO

CANTILEVER LIGHTING

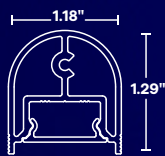
AERO redefines cantilever lighting through a sophisticated blend of performance, flexibility, and architectural simplicity. Its compact form factor, rotatable design, and precision optics make it an ideal solution for applications requiring both visual comfort and elevated aesthetics.



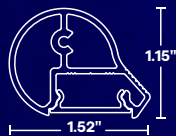
- Advanced light engines and precision optics integrated into a compact cantilever design
- Superior QTL light quality with high CRI, delivering up to 959 lm/ft in standard profiles and up to 318 lm/ft in micro profiles
- Best-in-class low-glare illumination for exceptional visual comfort
- Precise 1-inch cut points for balanced, highly customizable layouts
- Minimalist appearance with virtually invisible hardware
- Adaptable for desks, countertops, walls, and vertical sconce applications
- No-stud mounting options simplify installation
- Standard stem spacing up to 8' on standard profiles and 6' on micro profiles, with standard 6", 12", and 18" stem lengths and custom options available



AERO-FIREFLY



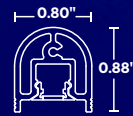
AERO-LS



AERO-QP



AERO-RD



AERO-S-LS



AERO-S-RD



QTL.lighting