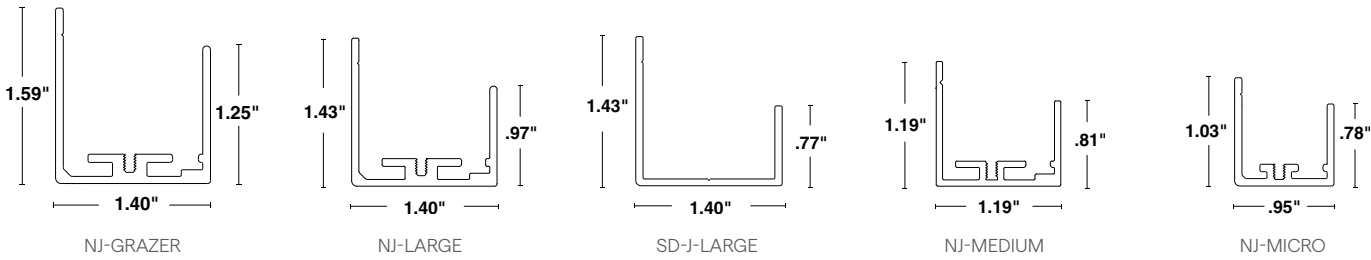
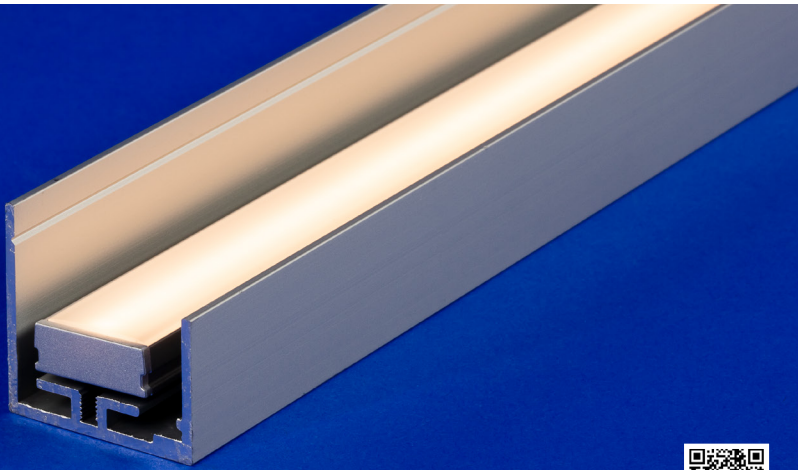


JLU BRACKETS

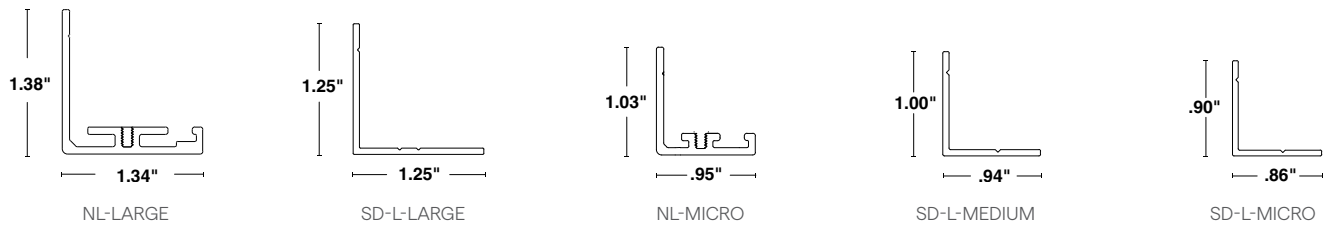
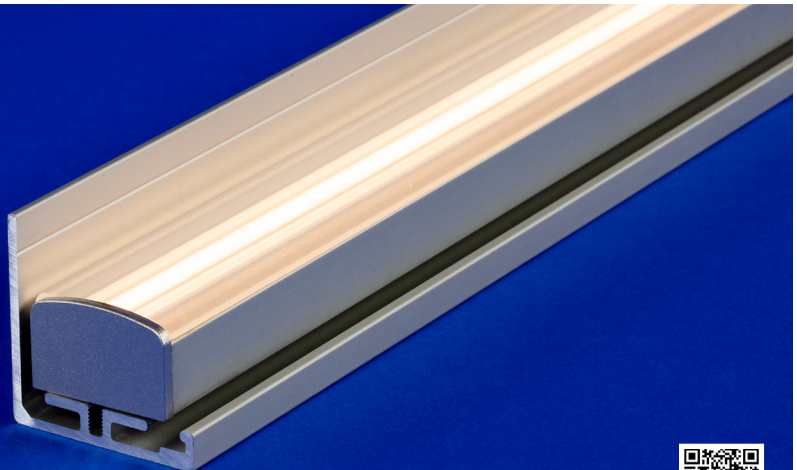
J BRACKETS

Features a slight reveal to hide the fixture



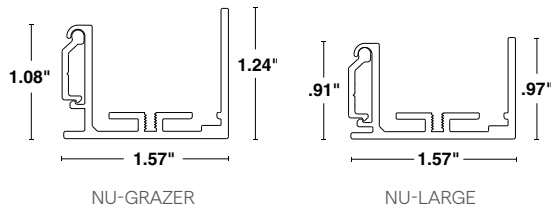
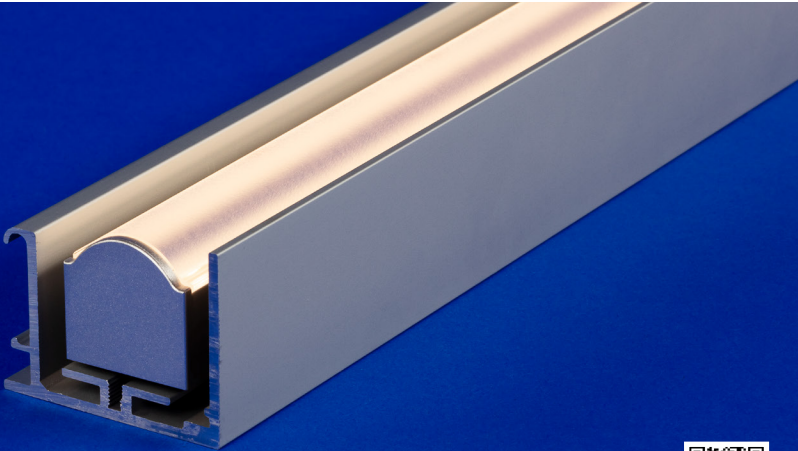
L BRACKETS

- No reveal, creating the least amount of cutoff
- L brackets are side mounted, best for wall applications



U BRACKETS

- Offers a taller reveal to hide fixtures and mounting hardware
- Includes mounting bracket and wall mount



BACKWARD L BRACKETS

- No reveal, creating the least amount of cutoff
- Backwards L mounts from the bottom, ideal for illuminating pre-existing cove applications

